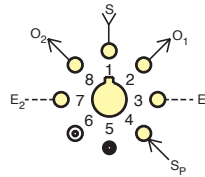
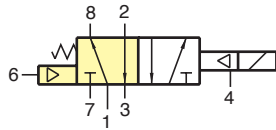




## R-481-□



**Note:** Supply pressure must be applied to both ports 1 & 4. Minimum pressure on port 4 should be 40 psig.

**Type:** 4-way combination electronic and modular spool type interface valve. Fully ported ET-3 & R401 hybrid

**Medium:** Air, water, or oil; pilot - air only

**Input Pressure:** Pilot - 40 psig minimum  
Working - 0 to 150 psig

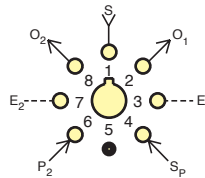
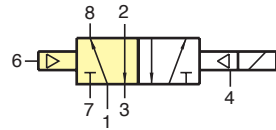
**Air Flow:** Valve - 9 scfm @ 100 psig

**Voltages:** R-481-6 6 VDC  
R-481-12 12 VDC  
R-481-24 24 VDC

**Mounting:** Uses Octoport base and two captivated screws

**Ports:** Valve has patented Octoport system

## R-482-□



**Note:** Supply pressure must be applied to both ports 1 & 4. Minimum pressure on port 4 should be 40 psig.

**Type:** 4-way combination electronic and modular spool type interface valve. Fully ported ET-3 & R402 hybrid

**Medium:** Air, water, or oil; pilot - air only

**Input Pressure:** Pilot - 40 psig minimum  
Working - 0 to 150 psig

**Air Flow:** Valve - 9 scfm @ 100 psig

**Voltages:** R-482-6 6 VDC  
R-482-12 12 VDC  
R-482-24 24 VDC

**Mounting:** Uses Octoport base and two captivated screws

**Ports:** Valve has patented Octoport system

For more information please see Page \_\_\_\_ in the Modular Valve section of this catalog.

## ET-C48 ET-C120

Black molded lug connectors are available for easy push on connection ET-C48 is 48" in length, ET-C120 is 120" in length

### ET Valve Connectors



## 3831

Insulated crimp-on spade lug connectors are available for wiring up leads to connect electronic circuit to ET style valves. Accepts #22, #24, or #26 wire.



## C2-RB18 C2-RB120

AMP connector #5-103959-1 with 18" or 120" wire leads for EC/ECO and EI/EIO valves

### EC & EI Valve Connectors

